



MTS

MTS

COLLEGE

2023-2024



#MTSFAMILY

MTS is an exciting new chapter in the development of musical theatre training in the North East offering a dynamic, electrifying and fulfilling college experience, guided by the principles of self-development, discipline and fearlessness. MTS allows and encourages students to **excel in all areas of training**, with expert industry coaches helping develop the necessary skills, passion and mindset required for the business we call "show".

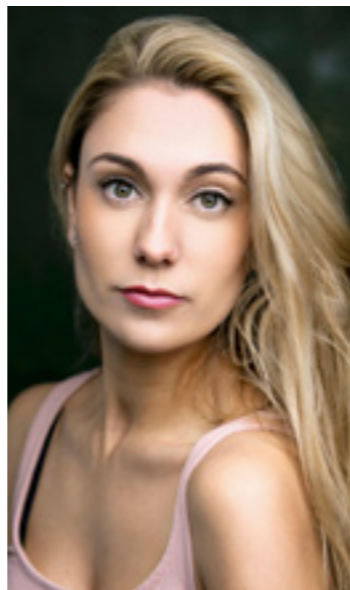
MTS was founded in October 2018 by West End star and Arts Educational Schools London graduate **Annie Guy** and has gone on to become one of the leading musical theatre academies in the North East. Students from MTS (#MTSTrained) have gained places at prestigious performing arts schools, colleges and universities such as ArtsEd, Mountview, Royal Central School of Speech and Drama, Laine Theatre Arts, Urdang, Guilford School of Acting, Bird College, LAMDA, Italia Conti, The BRIT School and many more.

In 2022, MTS partnered with Olivier Award-winning West End production company **DLAP Group** and established a new 8-studio home at the Quayside Exchange building in the heart of Sunderland with **state-of-the-art facilities** for students and coaches alike, as well as a dedicated student space for self-reflection, study and rehearsal. A building that buzzes with adventure, energy and hard work – this will be the start of many student's exciting journey into musical theatre training for years to come.

MTS is also proud to offer exceptional and confidential pastoral care to all its students. The mental wellbeing of our students is as important as their physical wellbeing.

Come join us at MTS and become part of our #MTSFamily!

DLAP



Annie Guy | Founder/Principal

#MTSETHOS

INDIVIDUALITY

Here at MTS, we make sure we carefully nurture and develop all of our student's **individual talents** whilst helping them acquire and improve new skills and abilities. We focus on each student's specific strengths and weaknesses instead of a "one size fits all" methodology.

GROWTH

MTS encourages students to view their everyday challenges in training as **positive growth**. This is when we develop the most and find the strength to build resilience whilst also improving in both mindset and ability.

MINDSET

At MTS, we have a strong focus on **self-development** as student's mature and grow as young performers. We run weekly mindset tutorials focusing on confidence building, positivity coaching and mental well-being.

SELF-DISCIPLINE

All MTS students are required to constantly log, reflect and **take responsibility** for their growth, progress and training. We coach students to be as open, honest and self-aware as possible.

RESILIENCE

At MTS, we understand that any student entering into the performing world needs the correct care, education and focus. We coach our students to be strong, confident and **fearless**.

AMBITION

MTS is a college built for any performer with ambition. We nurture individual creative talent and support and encourage students to be determined and have a strong desire to **achieve success**.



#MTSTRAINING

THE COURSE: BTEC NATIONAL EXTENDED LEVEL 3 DIPLOMA IN MUSICAL THEATRE

The MTS BTEC National Extended Level 3 Diploma in Musical Theatre course is a 2 year, four-day week which prepares students aged 16-18 for drama school auditions and the industry, developing the skills, confidence and abilities required in all three musical theatre disciplines and beyond. A full-time course set over three intensive terms, students receive a personalised advanced training programmes with 32 hours of contact time per week. This course has been accredited by the UK Government, meaning that MTS receives funding per student to run the course.

SINGING

is the "act of producing musical sounds with the voice", encouraging students to delve into the understanding of the physical biology of the human voice whilst encouraging students to find confidence and conviction to sing solo, in duets and with a group, through a variety of styles and genre of musical theatre.

- Weekly private singing lesson
- Ensemble singing
- Acting through song
- Audition preparation
- Repertoire class

DANCE

being the "movement of the body in a rhythmic way", allows students to develop technical skill and discipline whilst also encouraging expression and exploration through various genres of music and dance forms.

- Jazz
- Ballet
- Tap
- Commercial
- Musical Theatre
- Audition Dance Call
- Pick Up (audition prep)



ACTING

"the art in which movement, gesture and intonation are used to realise a character for the stage" urges students to engage themselves in the skills and discipline required to immerse fully into character whilst understanding the history of various practitioners, playwrights and written plays.

- Practitioners
- Shakespeare
- Monologue Workshop
- Acting with others

ABOVE AND BEYOND

is where MTS sets a standard above all others with its focus on the mental and physical well-being of all its students as well as allowing students to delve into the history of our art form, have access to renowned industry coaches and have access to expert advice and workshopping to prepare them for future auditions and interviews.

- Fitness
- Interview technique
- Audition application
- Workshops with industry professionals



BTEC Course delivered by Lead Academy, funded by National College



#MTSTRAINING

THE COURSE: 1 YEAR INTENSIVE MUSICAL THEATRE Full-Time

The MTS 1 Year Intensive Musical Theatre (Full-Time) course prepares students for drama school auditions and the industry, developing the skills, confidence and abilities required in all three musical theatre disciplines and beyond. A full-time course set over three intensive terms, students receive a personalised advanced training programme with 32 hours of contact time per week.

SINGING

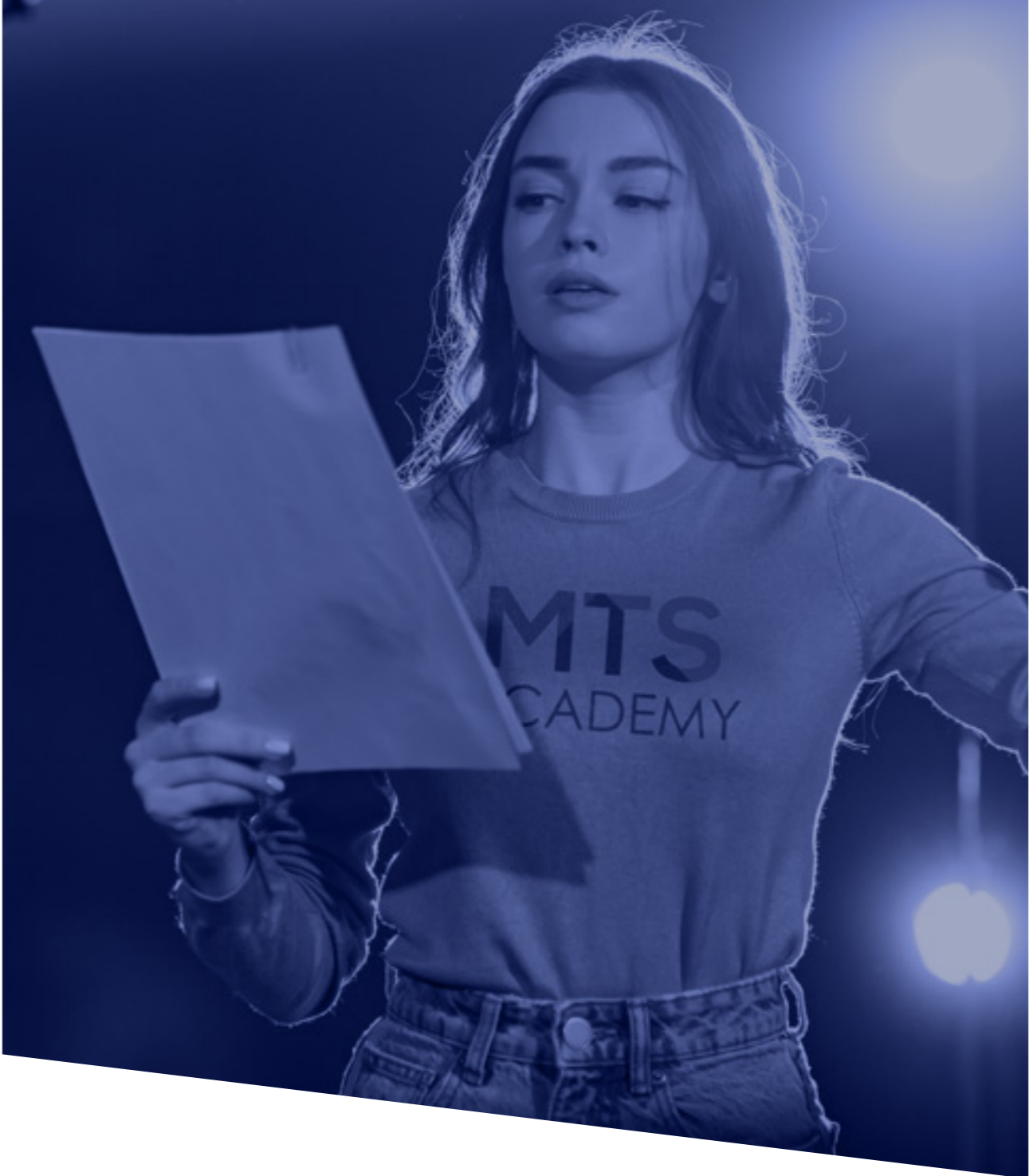
is the "act of producing musical sounds with the voice", encouraging students to delve into the understanding of the physical biology of the human voice whilst encouraging students to find confidence and conviction to sing solo, in duets and with a group, through a variety of styles and genre of musical theatre.

- Weekly private singing lesson
- Ensemble singing
- Acting through song
- Audition preparation
- Repertoire class

DANCE

being the "movement of the body in a rhythmic way", allows students to develop technical skill and discipline whilst also encouraging expression and exploration through various genres of music and dance forms.

- Jazz
- Ballet
- Tap
- Commercial
- Musical Theatre
- Audition Dance Call
- Pick Up (audition prep)



ACTING

"the art in which movement, gesture and intonation are used to realise a character for the stage" urges students to engage themselves in the skills and discipline required to immerse fully into character whilst understanding the history of various practitioners, playwrights and written plays.

- Practitioners
- Shakespeare
- Monologue Workshop
- Acting with others

ABOVE AND BEYOND

is where MTS sets a standard above all others with its focus on the mental and physical well-being of all its students as well as allowing students to delve into the history of our art form, have access to renowned industry coaches and have access to expert advice and workshopping to prepare them for future auditions and interviews.

- Fitness
- Interview technique
- Audition application
- Workshops with industry professionals



#MTSTRAINING

THE COURSE: 1 YEAR INTENSIVE MUSICAL THEATRE Part-Time

The MTS 1 Year Intensive Musical Theatre (Part-Time) course is specially designed to effortlessly work around students' day-jobs, with the course taking place over four evenings per week with 9 hours of contact time. Similar to the full-time course, the training prepares students for drama school auditions and the industry, developing the skills, confidence and abilities required in all three musical theatre disciplines and beyond.

SINGING

is the "act of producing musical sounds with the voice", encouraging students to delve into the understanding of the physical biology of the human voice whilst encouraging students to find confidence and conviction to sing solo, in duets and with a group, through a variety of styles and genre of musical theatre.

- Song Workshop
- Audition preparation
- Repertoire class

DANCE

being the "movement of the body in a rhythmic way", allows students to develop technical skill and discipline whilst also encouraging expression and exploration through various genres of music and dance forms.

- Jazz
- Ballet
- Musical Theatre (including Tap & Commercial)
- Audition Dance Call
- Pick Up (audition prep)

ACTING

"the art in which movement, gesture and intonation are used to realise a character for the stage" urges students to engage themselves in the skills and discipline required to immerse fully into character whilst understanding the history of various practitioners, playwrights and written plays.

- Practitioners
- Shakespeare
- Monologue Workshop
- Acting with others

ABOVE AND BEYOND

is where MTS sets a standard above all others with its focus on the mental and physical well-being of all its students as well as allowing students to delve into the history of our art form, have access to renowned industry coaches and have access to expert advice and workshopping to prepare them for future auditions and interviews.

- Mindset
- Fitness
- Interview technique
- Audition application
- Workshops with industry professionals



#MTSTRAINED



#MTSTRAINED

MTS are proud to have helped develop many students who have progressed and gained places to the following schools, colleges and universities:

ALRA
AMDA
ArtsEd
Bird College
BRIT School
Drama Centre London
Drama Studio London
East 15
Emil Dale
GSA

Guildhall
Guildford School of Acting
Identity School of Acting
Italia Conti
Laine Theatre Arts
LAMDA
LSMT
Mountview
Performers
PPA

Rose Bruford
Royal Central School
of Speech and Drama
Royal Conservatoire
of Scotland
Sage Academy
Tring Park
Trinity Laban
Urdang



#MTSPERFORMANCE

It is an important part of the #MTSEthos to take what skills and abilities students have learnt throughout the course and put them into practice. At the end of the final term, students will have the opportunity to perform a **showcase**, curated and directed by both the MTS coaches and guest creatives from within the industry. Not only will this enrich their training by giving them the chance to learn how to perform in front of a **live audience** but will also present the unique opportunity for students to show their friends and family the progress that they have made throughout their time on the course, both in physical skill and ability and also confidence.

#MTSMINDSET

MTS is committed to looking after the **mental well-being** of all its students at the same high level that the industry has always looked after physical health. All MTS coaches are trained in mental health first-aid and all have a focus on assisting and supporting students through their self-development and growing confidence, advising on key industry issues such as managing stress, dealing with rejection, self-reflection and emotional resilience.



#MTSPERFORMANCE | MINDSET

#MTSAUDITIONS

Admissions to our BTEC National Extended Level 3 Diploma, 1 Year Full-Time Intensive and 1 Year Part-Time Intensive are by audition. Audition dates for entry in September 2023 can be found on our website or by emailing college@mtsuk.org.

We encourage all prospective students to apply early.

On the day of their auditions, all candidates will take part in a **jazz dance class** and a one-on-one interview with one of the MTS coaches. In addition, each candidate will be required to prepare a **monologue** and a **song**. Each piece should be no longer than 1-2 minutes and fully memorised. Candidates should also be prepared to discuss both their monologue and song. Candidates will also be expected to provide sheet music for their songs (either taped together or in a folder) and a pianist will be provided.

#MTSAPPLY

Full name

Date of Birth

Pronouns

Email Address

Address

Postcode

PROGRAMME OF INTEREST

1 Year Intensive Musical Theatre (Full-Time)

1 Year Intensive Musical Theatre (Part-Time)

BTEC National Extended Level 3 Diploma

Your details will only be used by MTS. Please contact us to read our Privacy Policy.

Please save and return this application form to admissions@musicaltheatrestudio.com

#MTSFEES

1 Year Intensive Musical Theatre (Full-Time) 2022/23 **£5,995**

1 Year Intensive Musical Theatre (Part-Time) 2022/23 **£2,995**

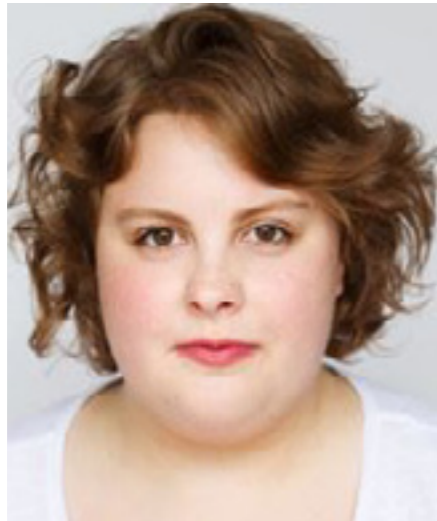
BTEC National Extended Level 3 Diploma **£4,495 per annum**

Subject to eligibility, there may be available funding for your study programme



#MTSPATRONS

MTS are proud to have the following industry individuals recognised as Patrons of the college.



LIZZIE BEA
Actor

Hairspray – West End
Sister Act – West End
Heathers – West End



DANIELLE HOPE
Actor

The Sound of Music – West End
Rock of Ages – UK Tour
Kinky Boots – Broadway



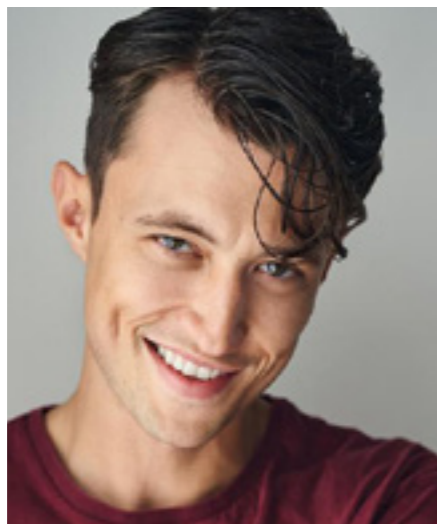
NICK WINSTON
Director/Choreographer

Bonnie & Clyde – West End
Annie – West End
Rock of Ages – UK Tour



KATY RICHARDSON
Musical Supervisor

Six – West End
Jersey Boys – West End
Bonnie & Clyde – West End



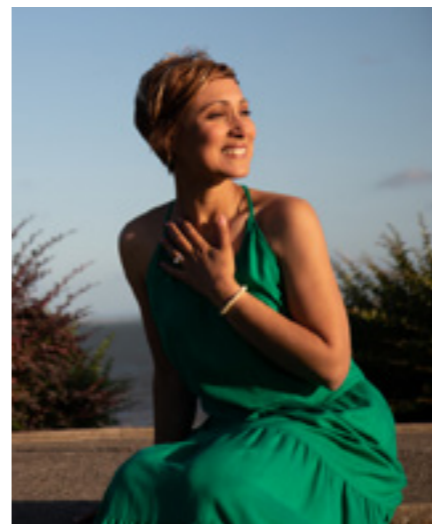
JORDAN LUKE GAGE
Actor

Bonnie & Clyde – West End
Heathers – West End
Bat Out of Hell – West End



CLEVE SEPTEMBER
Actor

Hamilton – West End – Olivier Nominated
Bonnie & Clyde – West End
Jesus Christ Superstar – West End



SOPHIA RAGAVELAS
Actress/ Mindset Coach

Les Misérables – West End
Cats – West End
West Side Story – West End

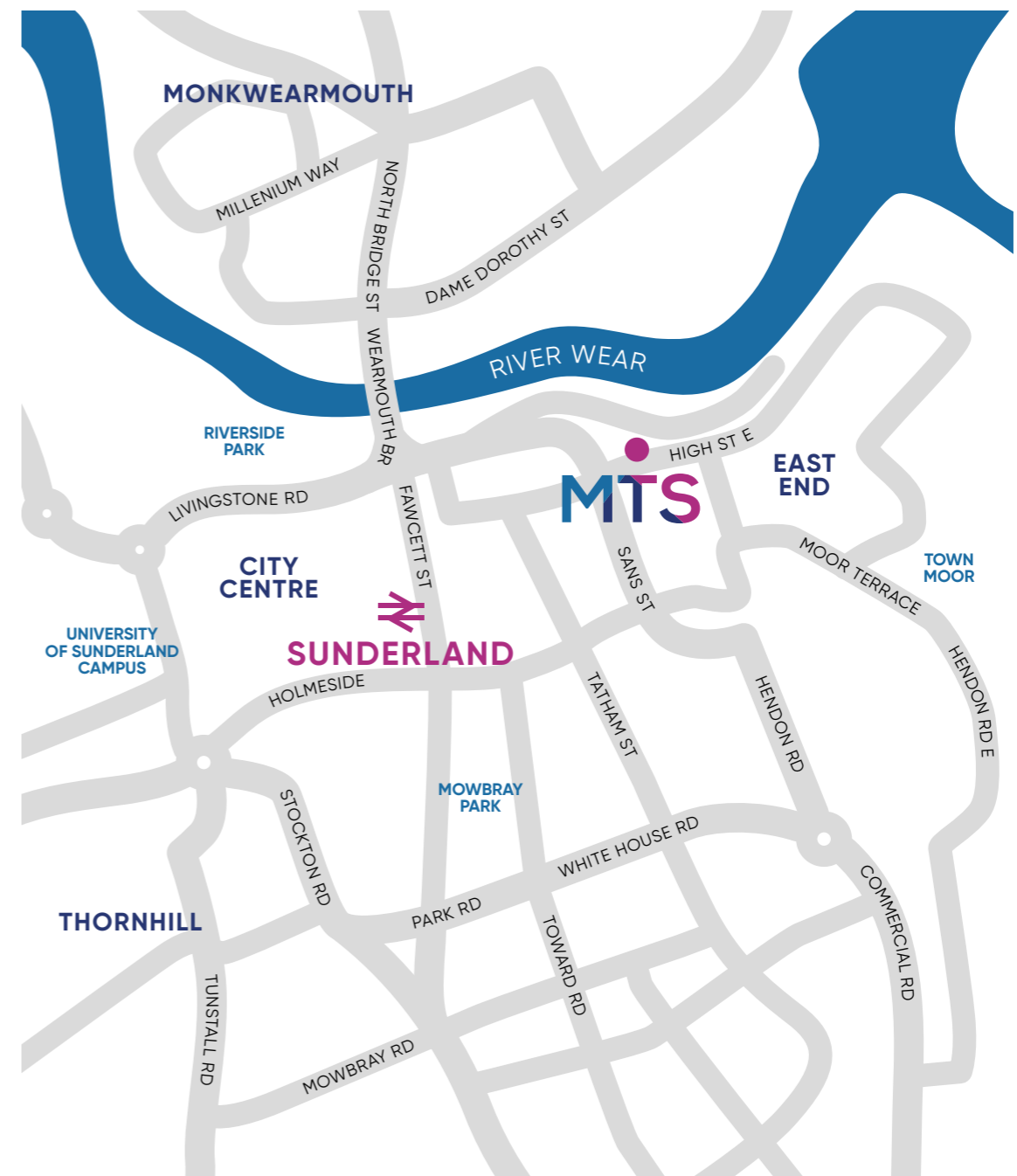
#MTSLOCATION

MTS is uniquely situated at the historic Quayside Exchange building in the heart of Sunderland.

MTS, Quayside Exchange
197 High St E
Sunderland
SR1 2AX

A short 5-minute walk from Sunderland station, the college is afforded easy and quick train links to all major cities and towns in the North East as well as regular Metro services in and around Sunderland and Newcastle.

- Metro services throughout **Sunderland** and to **South Hilton** (11 minutes), **Gateshead** (25 minutes), **Newcastle City Centre** (29 minutes) and **Newcastle Airport** (54 minutes).
- Regional train services to **Seaham** (7 minutes), **Hartlepool** (19 minutes), **Newcastle** (20 minutes), **Dunston** (30 minutes), **Billingham** (38 minutes), **Stockton** (46 minutes), **Middlesbrough** (57 minutes),
- National train services to **Hartlepool** (19 minutes), **York** (2 hours), **London** (3 hours 30 minutes).
- Transfers via Newcastle Station to **Durham** (45 minutes), **Darlington** (1 hour), **Doncaster** (1 hour 45 minutes), **Carlisle** (2 hours 15 minutes), **Sheffield** (2 hours 30 minutes), **Edinburgh** (2 hours), **Leeds** (2 hours), **Manchester** (2 hours, 50 minutes), **Birmingham** (3 hours) and **Glasgow** (3 hours 15 minutes),



MTS also benefits from many local bus links.

- **9** (Jarrow, Primrose, Hedworth, Boldon Colliery, West Boldon, East Boldon, Seaburn Dene, Fulwell, Monkwearmouth)
- **20** (South Shields, Westoe, Harton, Cleadon, Seaburn Dene, Fulwell, Monkwearmouth, Eden Vale, Barnes Park, East Herrington, Stoneygate, Houghton-Le-Spring, East Rainton, West Rainton, Carrville, Gilesgate Moor, Durham)
- **35** (Boldon, Town End Farm, Hylton Castle, Castletown, Southwick, Barnes Park, East Herrington, West Herrington, Philadelphia, Houghton-Le-Spring, Hetton Downs, Hetton-Le-Hole, Low Moorsley)
- **38** (East End, Ashbrooke, Hillview, Grangetown, Hollycarrside, Ryhope Colliery, Tunstall)
- **38A** (East End)
- **56** (Newcastle, Gateshead, Deckham, Wrekenton, Springwell, Donwell, Concord, Sulgrave, Nissan, Hylton Castle, Hylton Red House, Southwick, Monkwearmouth)

MTS also boasts a large private car park for students, coaches and guests, accessed through Low St.



MTS ACADEMY

**MTS ACADEMY
MTS MINIS
MTS TOTS
MTS ONSTAGE
MTS DANCE TRAINING**

Apply now at academy@mtsuk.org